

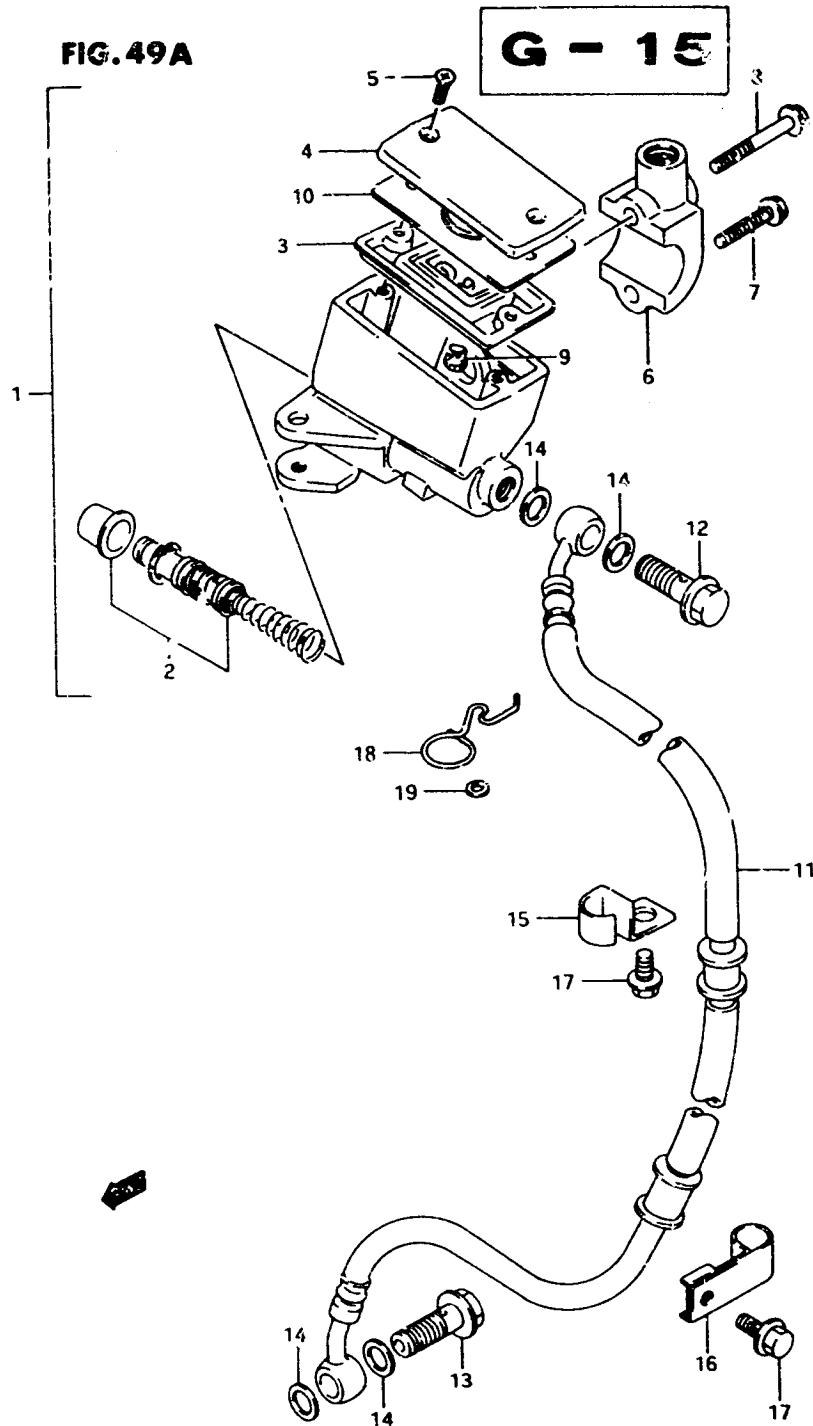
FIG.49A(G-15) FRONT MASTER CYLINDER (model P/R)

Q'TY

REF.NO.	PART NO.	DESCRIPTION	Q'TY	REMARKS
1	59600-45C20	CYLINDER ASSY, front master	1	
2	59600-04610	.PISTON/CUP SET	1	
3	59667-49460	.DIAPHRAGM	1	
4	59669-45C20	.CAP	1	
5	69689-49300	.SCREW	2	
6	59671-45C10	.HOLDER	1	
7	59675-19C00	.BOLT	1	
8	59675-19C10	.BOLT, upper	1	
9	59664-48B00	.PROTECTOR	1	
10	59668-41C00	.PLATE	1	
11	59480-45C10	HOSE, front brake	1	
12-1	09360-10017	BOLT	1	model P
12-2	09360-10039	BOLT	1	model R
13-1	09360-10033	BOLT, lower	1	model P
13-2	09360-10040	BOLT, lower	1	model R
14	09161-10009	WASHER	4	
15	59268-45C00	CLAMP, hose	1	
16	59268-01D10	CLAMP, hose	1	
17-1	01517-06125	BOLT	2	model P
17-2	01550-06123	BOLT	2	model R
18	59268-45C10	GUIDE, hose	1	
19-1	08322-21064	WASHER	1	model P
19-2	08322-01063	WASHER	1	model R

FIG.49A

G-15



VX800R E2

AIR CLEANER.....	C-8	CYLINDER.....	B-6	FUEL COCK.....	F-10	OPTIONAL.....	H-12	SEAT.....	F-11	WIRING HARNESS.....	E-16
BATTERY.....	F-4	CYLINDER HEAD.....	B-2	FUEL TANK.....	F-8	PROPELLER SHAFT.....	D-9	SECOND DRIVE GEAR.....	D-6		
CAM CHAIN.....	B-12	ELECTRICAL.....						CREEP/SLIP.....	F-6		