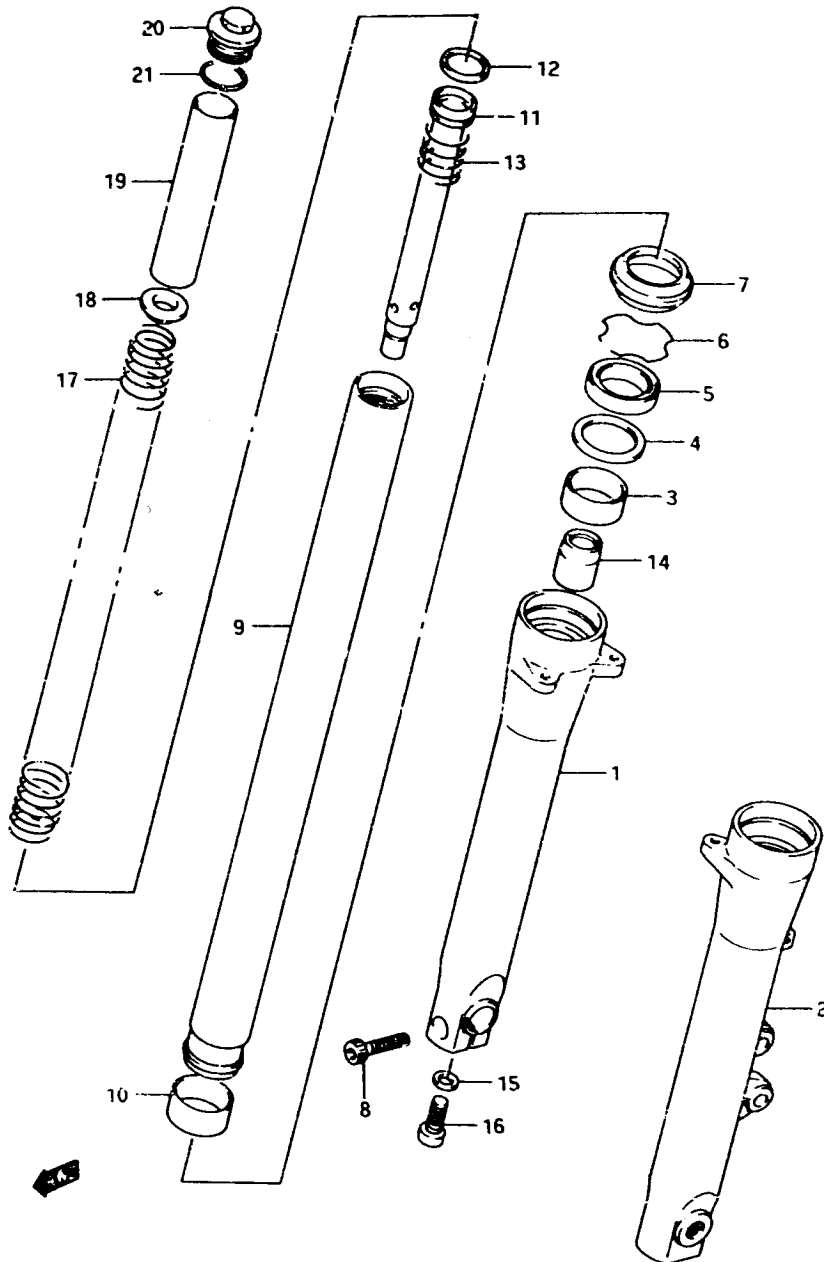


FIG. 40

G - 2

FIG. 40 (G - 2) FRONT DAMPER (model L/M/N)



REF. NO.	PART NO.	DESCRIPTION	Q'TY	REMARKS
	51103-45C00	DAMPER ASSY, RH	1	model L/M model N E2,E4,E15,E16,E17, E21,E22,E24,E25,E34
	51103-45C20	DAMPER ASSY, RH	1	model N E1
	51104-45C00	DAMPER ASSY, LH	1	model L/M
	51104-45C01	DAMPER ASSY, LH	1	model N E2,E4,E15,E16,E17, E21,E22,E24,E25,E34
	51104-45C21	DAMPER ASSY, LH	1	model N E1
1	51130-45C00	.TUBE, outer RH	1	
2-1	51140-45C00	.TUBE, outer LH	1	model L/M
2-2	51140-45C01	.TUBE, outer LH	1	model N
3	51167-28C00	.METAL, slide	2	
4	51158-05A00	.WASHER	2	
5	51153-06C00	.OIL SEAL	2	
6	51156-49440	.RING, snap	2	
7	51173-06C00	.SEAL, dust	2	
8	07110-08407	.BOLT, axle holder RH	1	
9	51110-45C00	.TUBE, inner	2	
10	51121-28C00	.PISTON	2	
11-1	51146-45C00	.CYLINDER	2	model L/M model N E2,E4,E15,E16,E17, E21,E22,E24,E25,E34
11-2	51146-45C20	.CYLINDER	2	model N E1
12	51196-05A00	.RING, piston	2	
13	51177-45C00	.SPRING, rebound	2	
14	51195-05C20	.PIECE, oil lock	2	
15	51148-41310	.GASKET	2	
16	51147-16510	.BOLT	2	
17-1	51171-45C00	.SPRING, main	2	model L/M model N E2,E4,E15,E16,E17, E21,E22,E24,E25,E34
17-2	51171-45C20	.SPRING, main	2	model N E1
18	51172-24A00	.GUIDE, spring	2	

Refer to FIG. 40A(G-4) for model P/R