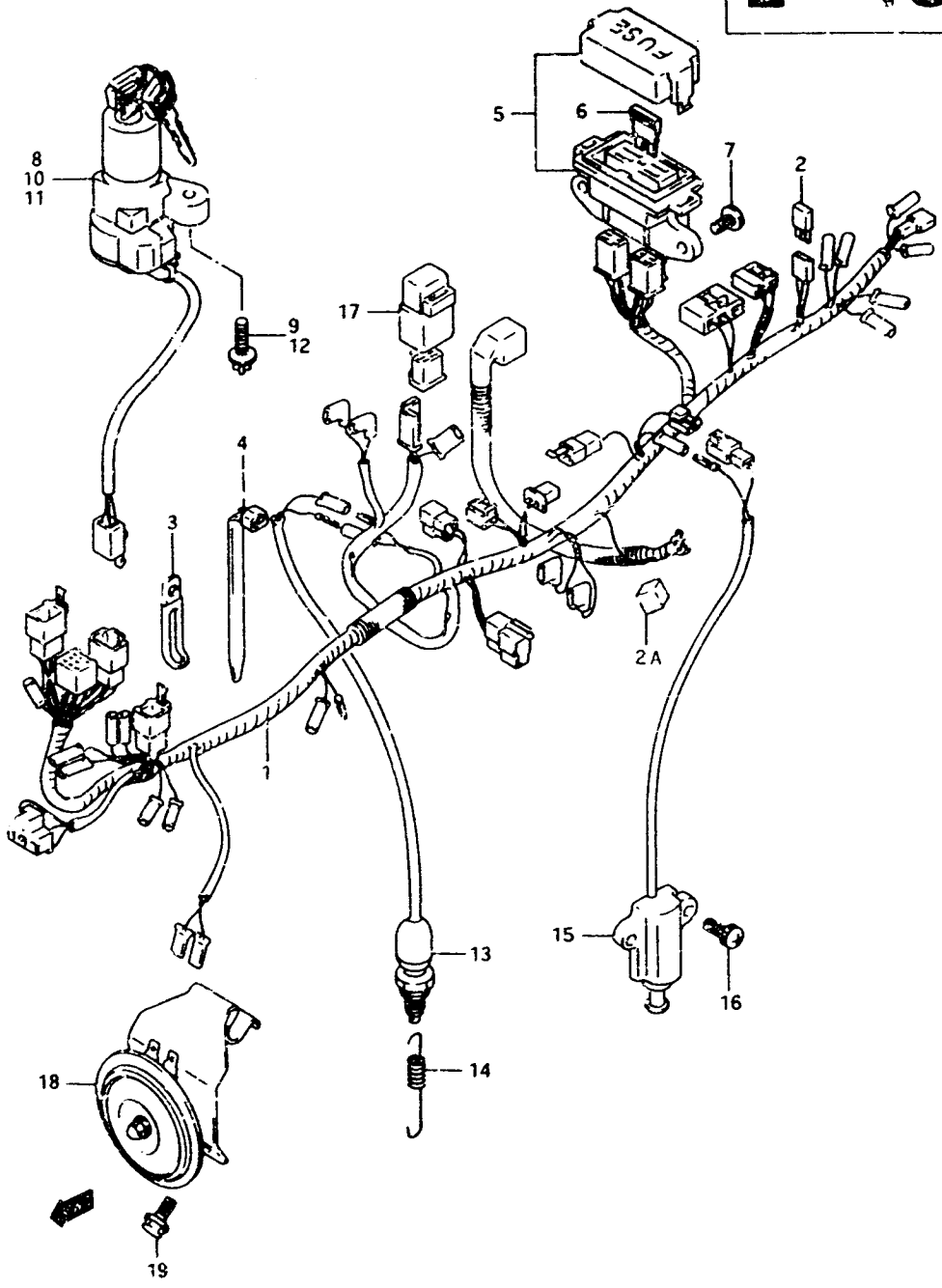


FIG. 32

E-16



49

FIG. 32 (E-16) WIRING HARNESS

QTY

REF. NO.	PART NO.	DESCRIPTION	QTY	REMARKS
1-1	36610-45C10	HARNESS, wiring	1	model L/M/N
1-2	36610-45C00	HARNESS, wiring	1	model L/M/R E22
1-3	36610-45C50	HARNESS, wiring	1	model P/R
2	36611-38A00	.DIGIDE	1	
2A	33624-27A00	.CAP	1	
3-1	09404-06402	CLAMP	3	
3-2	09404-05404	CLAMP (L:55)	1	
3-3	09404-06419	CLAMP	1	
3-4	09404-08405	CLAMP (L:67)	3	
4-1	09407-10404	CLAMP	2	
4-2	09487-14403	CLAMP (L:125)	2	
4-3	09407-12402	CLAMP (L:125)	4	
4-4	09407-18402	CLAMP (L:155,	4	
5	36740-34C01	FUSE BOX ASSY	1	
6-1	09481-10101	.FUSE (10A)	3	
6-2	09481-25101	.FUSE (25A)	1	
7	02142-06126	SCREW	2	
8	37100-17C00	SWITCH ASSY, ignition	1	model L
9	09139-06026	.BOLT	2	model L
10	37100-17C01	SWITCH ASSY, ignition	1	model M
11-1	37100-17C02	SWITCH ASSY, ignition	1	model N
11-2	37100-33G00	SWITCH ASSY, ignition	1	model P
11-3	37100-26G02	SWITCH ASSY, ignition	1	model R
12	09139-06026	BOLT	2	model M/N/P/R
13-1	37740-04A10	SWITCH ASSY, stop lamp	1	model L/M/N
13-2	37740-45C00	SWITCH ASSY, stop lamp	1	model P/R
14	09447-06043	SPRING	1	
15	37840-20A11	SWITCH ASSY, side stand	1	
16-1	02112-76205	SCREW	2	model L/M/N/P
16-2	01550-06203	BOLT	2	model R
17	38740-24B10	RELAY ASSY, side stand	1	
18	38500-45C00	HORN ASSY	1	
19-1	01517-06128	BOLT	2	model L/M/N
19-2	01134-06125	BOLT	2	model P
19-3	01570-06123	BOLT	2	model R

AIR CLEANER.....	C-8	CYLINDER.....	B-8	FUEL COCK.....	F-10	OPTIONAL.....	B-12	SEAT.....	F-11	WIRING HARNESS.....
BATTERY.....	E-4	CYLINDER HEAD.....	B-2	FUEL TANK.....	F-8	PROPELLER SHAFT.....	D-9	SECOND DRIVE GEAR.....	D-6	
CAN CHAIN.....	B-15	ELECTRICAL.....	F-5	GEAR SHIFT.....	D-7	RADIATOR.....	C-13	SPEEDOMETER.....	E-6	

VX800R E2