

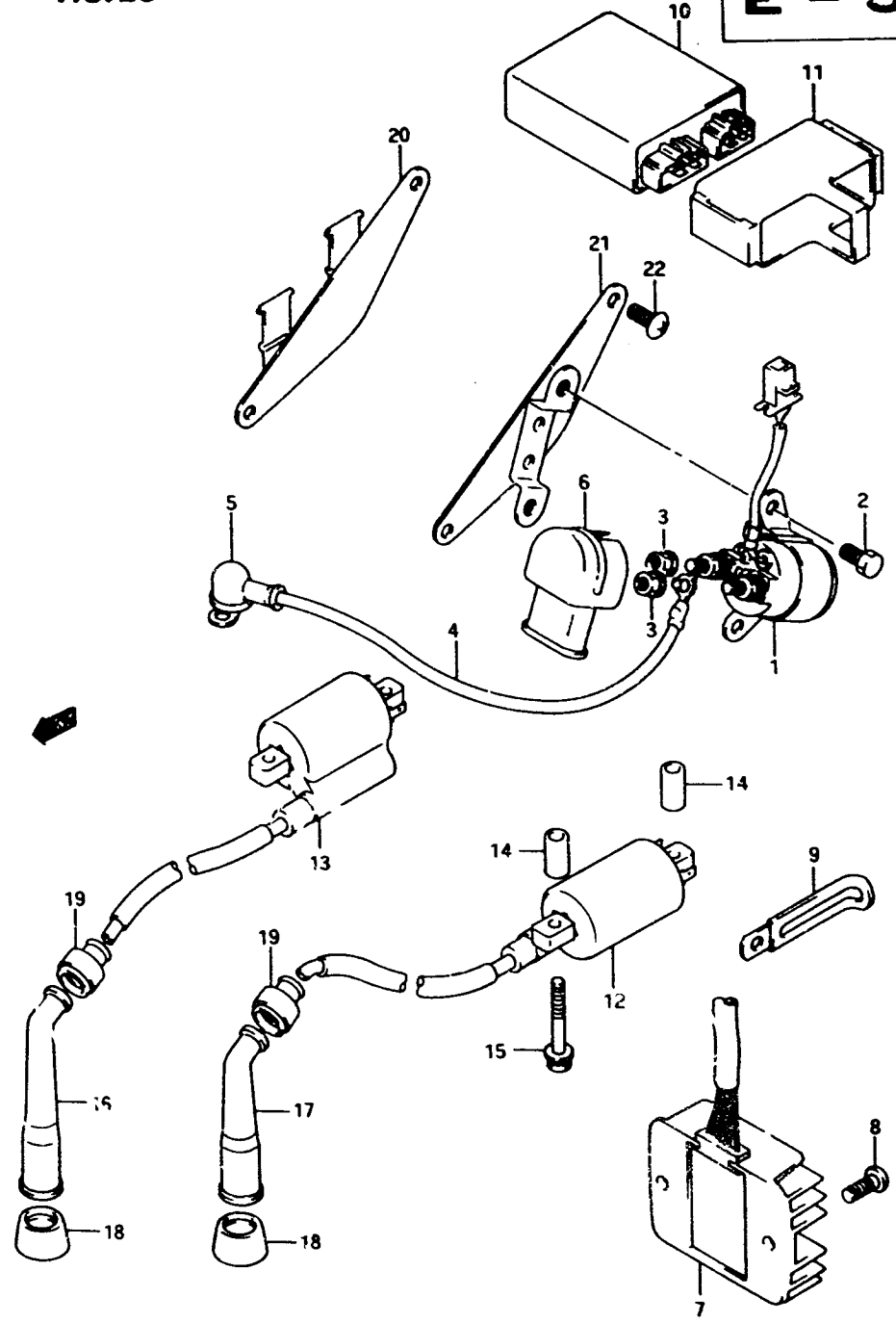
FIG. 26

E - 5

38

FIG. 26 (E - 5) ELECTRICAL

REF. NO.	PART NO.	DESCRIPTION	Q'TY	REMARKS
1-1	31800-15500	RELAY, starting motor	1	model L/M
1-2	31800-15501	RELAY, starting motor	1	model N/P/R
2-1	01104-06086	BOLT	2	model L/M/N/P
2-2	09100-06157	BOLT	2	model R
3	08361-35066	NUT	2	
4	33850-45C00	LEAD WIRE, starting motor	1	
5	31861-05300	.CAP, terminal	1	
6	33624-00A10	CAP, terminal	1	
7	32800-45C00	RECTIFIER, regulator	1	
8-1	02112-06164	SCREW	2	model L/M/N/P
8-2	02112-06163	SCREW	2	model R
9	09404-06404	CLAMP	1	
10-1	32900-45C00	IGNITER UNIT	1	
10-2	32900-45C10	IGNITER UNIT	1	E18
11-1	32980-40C00	COVER, ignitor	1	model L/M/N/P
11-2	32980-40C01	COVER, ignitor	1	model R
12-1	33410-45C00	COIL, ignition,RR	1	model L/M/N/P
12-2	33410-45C01	COIL, ignition,RR	1	model R
13-1	33420-45C00	COIL, ignition,FR	1	model L/M/N/P
13-2	33420-45C01	COIL, ignition,FR	1	model R
14	09180-06144	SPACER	4	
15-1	01174-05406	BOLT	4	model L/M/N/P
15-2	01580-05403	BOLT	4	model R
16	33510-11410	CAP, spark plug	1	FR
17	33510-45010	CAP, spark plug	1	RR
18	33541-24510	SEAL, plug	2	
19	33542-38B00	SEAL, hightension cord	2	
20	47410-45C00	HOLDER, RH	1	
21	47420-45C10	HOLDER, LH	1	
22-1	02142-06125	SCREW	3	model L/M/N/P
22-2	02142-06123	SCREW	3	model R
22-3	02142-06164	SCREW	1	RH,FR,model L/M/N/P
22-4	02142-06163	SCREW	1	RH,FR,model R



AIR CLEANER.....	C-8	CYLINDER.....	B-6	FUEL TANK.....	F-10	OPTIONAL.....	H-12	SEAT.....	F-11	WIRING HARNESS.....	E-16
BATTERY.....	E-4	CYLINDER HEAD.....	B-2	FUEL TANK.....	F-8	PROPELLER SHAFT.....	D-9	SECOND DRIVE GEAR.....	D-6		
CAN CHAIN.....	B-13	ELECTRICAL.....	E-5	GEAR SHAFT.....	D-7	RADIATOR.....	C-13	SPEEDOMETER.....	E-6		

VX800R E2