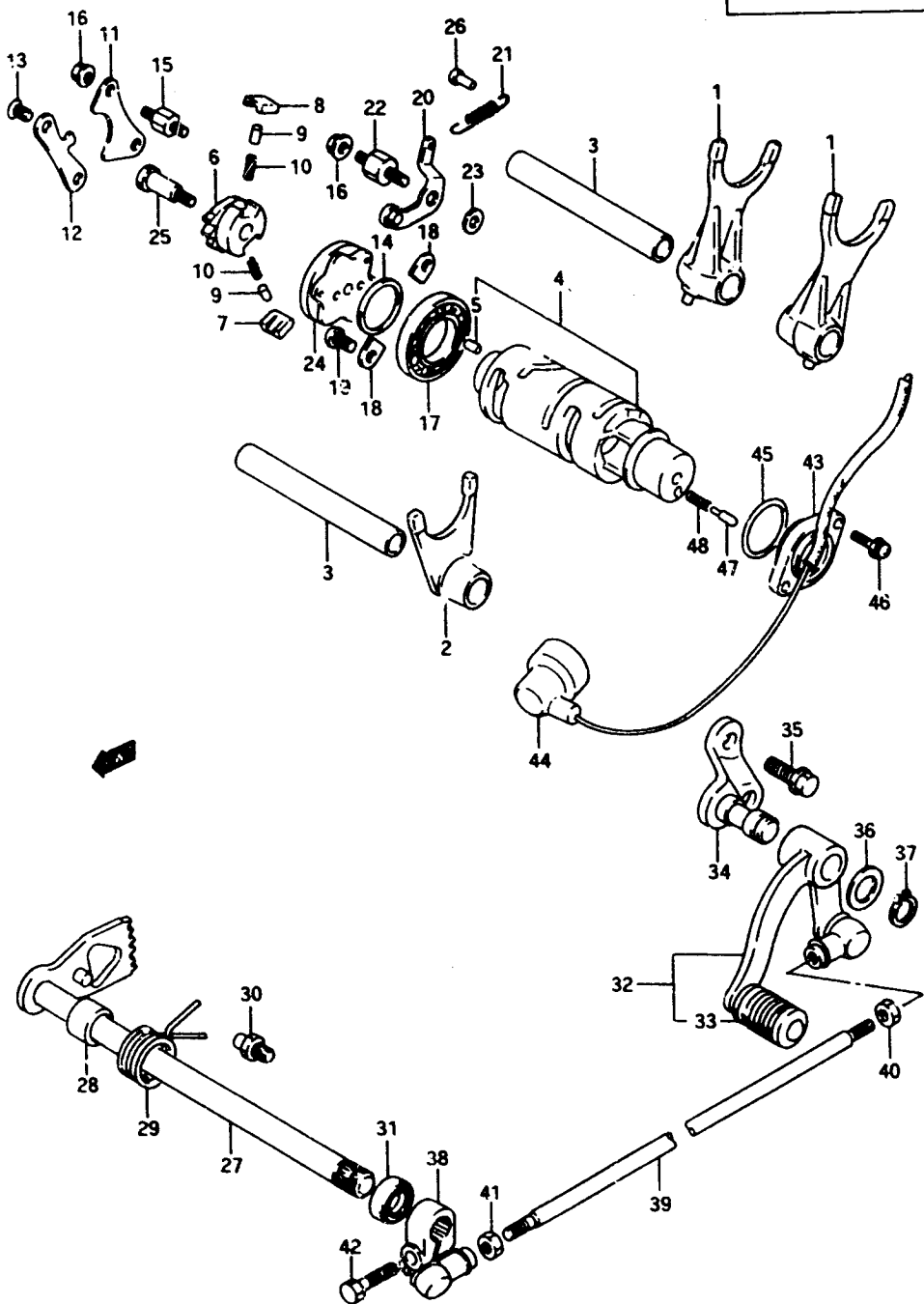


FIG. 21

D - 8

FIG. 21 ( D- 8) GEAR SHIFTING



REF. NO.	PART NO.	DESCRIPTION	Q'TY	REMARKS
32-1	25600-45C02	LEVER ASSY, gear shifting	1	model L/M/N/P
32-2	25600-45C03	LEVER ASSY, gear shifting	1	model R
33	25652-20C00	.COVER	1	
34	25680-45C01	BRACKET, gear shift lever	1	
35-1	01517-08205	BOLT	2	model L/M/N
35-2	01807-08185	BOLT	2	model P
35-3	01810-08203	BOLT	2	model R
36	09160-12011	WASHER (12.5x20x1)	1	
37	08371-51126	CIRCLIP	1	
38	25520-45C00	ARM, gear shift link	1	
39	25525-45C00	ROD (L:290)	1	
40	09140-06011	NUT	1	
41-1	08310-11067	NUT	1	model L/M/N/P
41-2	08310-00067	NUT	1	model R
42-1	01107-06207	BOLT	1	model L/M/N/P
42-2	01500-06207	BOLT	1	model R
43	37720-45C00	BODY, switch	1	
44	36618-43410	.CAP	1	
45	09280-26005	O RING (D:2.4, ID:26.2)	1	
46	02112-75168	SCREW	2	
47	09209-05011	CONTACT, switch	1	
48	09440-04010	SPRING	1	