

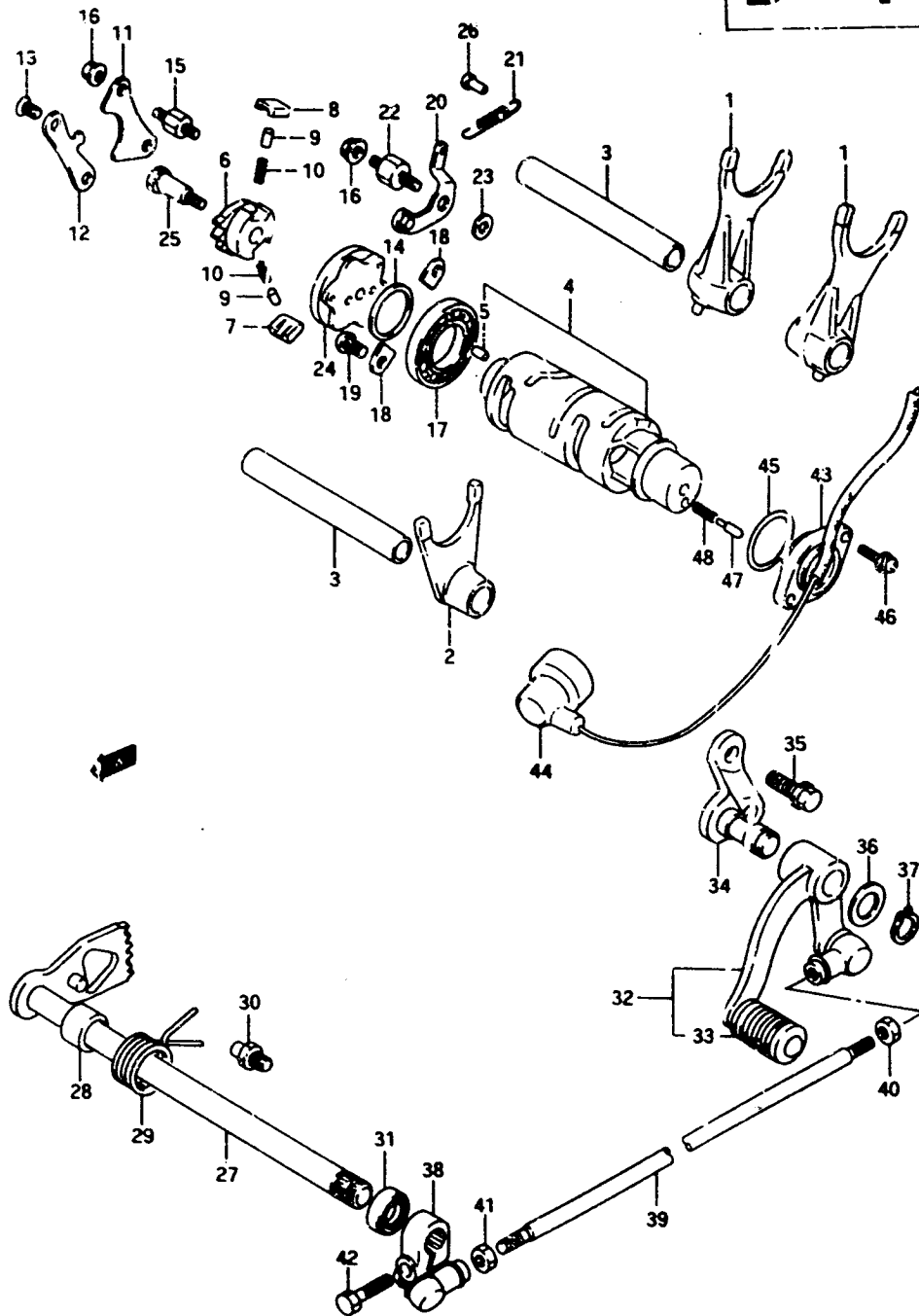
FIG. 21

D - 7

31

FIG. 21 ( D- 7) GEAR SHIFTING

REF. NO.	PART NO.	DESCRIPTION	Q'TY	REMARKS
1	25211-38A02	FORK, gear shifting No.1	2	
2	25221-38A01	FORK, gear shifting No.2	1	
3	25411-38A00	SHAFT, gear shifting fork	2	
4	25310-38A03	CAM, gear shifting	1	
5	04221-04009	.PIN	2	
6	25322-31301	GEAR, cam driven	1	
7	25323-34201	PAWL, No.1	1	
8	25324-34201	PAWL, No.2	1	
9	09261-05003	PIN	2	
10	09440-04003	SPRING	2	
11	25331-38A00	LIFTER, pawl	1	
12	25341-38A00	GUIDE, cam	1	
13	02122-06128	SCREW	2	
14	09160-25059	WASHER (2"x32x3)	1	
15	25332-38A00	BOSS	1	
16-1	09159-06017	NUT	2	model L/M/N/P
16-2	08316-10063	NUT	2	model R
17-1	09262-25002	BEARING (25x47x8)	1	model L/M/N/P
17-2	09262-25006	BEARING (25x47x8)	1	model R
18	24741-20A10	RETAINER, bearing	2	
19	02112-06128	SCREW	1	
20	25350-38A00	STOPPER, cam	1	
21	09443-08051	SPRING	1	
22	25355-38A00	SUPPORT	1	
23	08211-06141	WASHER	1	
24	25380-38A02	PLATE, stopper	1	
25	25312-38A00	PIN	1	
26	09223-04001	HOOK	1	
27	25510-38A00	SHAFT, gear shifting	1	
28	09180-12068	SPACER (12x20x15.3)	1	
29	09444-26012	SPRING	1	
30	25671-01000	STOPPER, arm	1	
31	09285-12002	OIL SEAL (12x22x9)	1	



VX800R E2