

FIG. 11

C-7

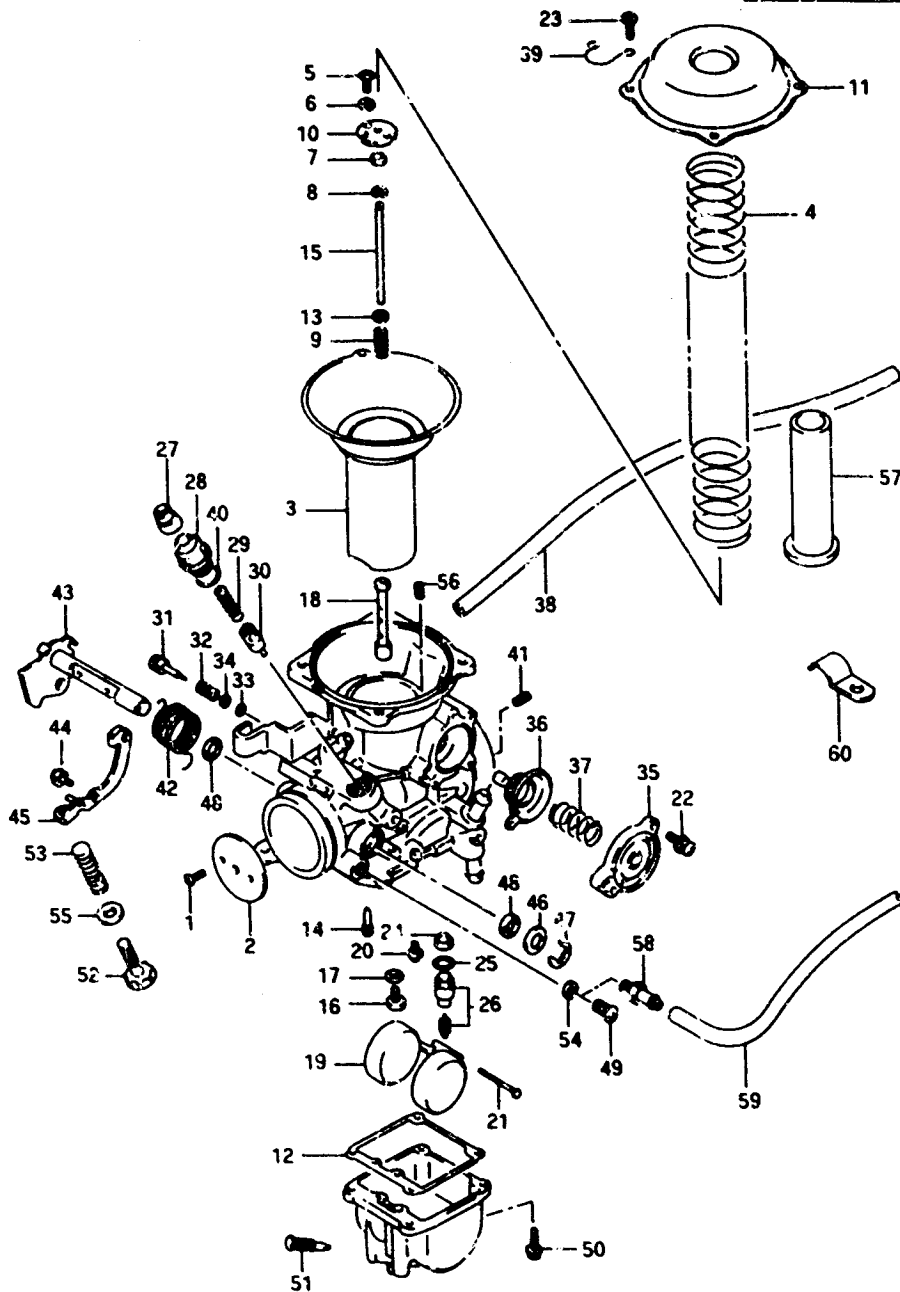
18

FIG. 11 (C-7) CARBURETOR (REAR)

QTY

REF. NO.	PART NO.	DESCRIPTION	QTY	REMARKS
43	13550-45C00	.SHAFT ASSY	1	
44	13602-05A30	.SCREW	1	
45	13554-45C00	.LEVER ASSY	1	
46	13557-47070	.WASHER	1	
47	13617-14080	.E RING	1	
48	13556-05A10	.SEAL	2	
49	02112-05068	.SCREW	1	EXCEPT E18
50	13601-04148	.SCREW	4	
51	13247-13A00	.SCREW, drain	1	+13247-38800
52	13267-43C00	.ADJUSTER	1	
53	13271-93011	.SPRING	1	
54	13523-46110	.WASHER	1	EXCEPT E18
55	13277-3710C	.WASHER	1	+13432-3710C
56-1	09493-10003	.JET, pilot air (2.0)	1	
56-2	09493-30003	.JET, pilot air (1.95)	1	E18
57	.RING	1	E17, E18, VX800UR/UM/UN/UR E22	
58	13685-45C00	.NIPPLE	1	model N/P/R
59	09354-45853-300	HOSE	1	model N/P/R
60	09403-09306	CLAMP, air vent hose	1	

Note : The component part for VX800UR E22 spec, will be announced later by supplementary issue. So please do not use the parts number for VX800UR E22 spec in this page.



VX800R E2

AIR CLEANER.....	C-8	CYLINDER.....	E-8	FUEL COCK.....	F-10	OPTIONAL.....	H-12	SEAT.....	F-11	WIRING HARNESS.....	E-16
BATTERY.....	E-4	CYLINDER HEAD.....	D-2	FUEL TANK.....	F-8	PROPELLER SHAFT.....	D-9	SECOND DRIVE GEAR.....	D-6		