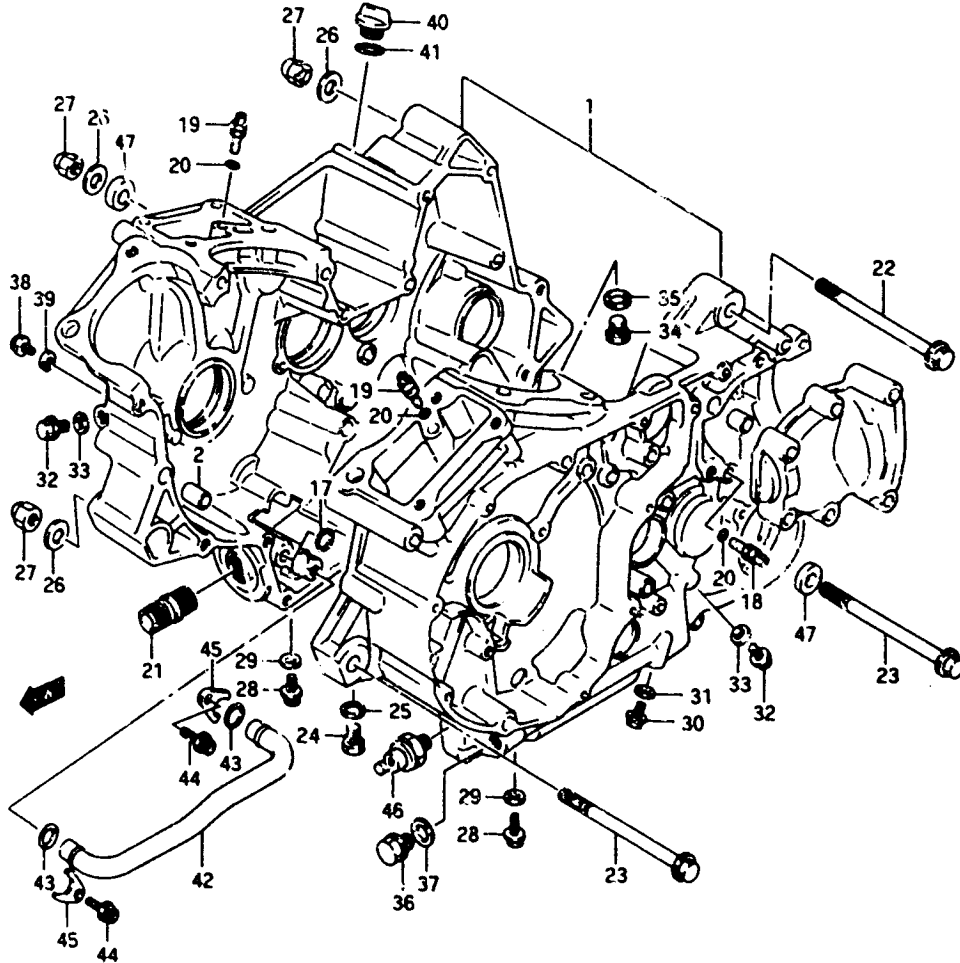
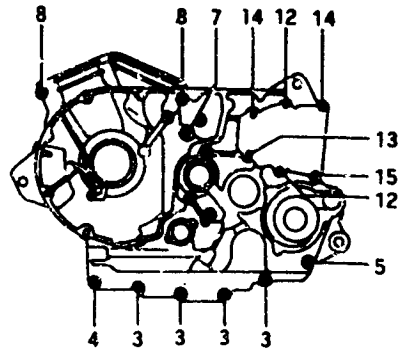
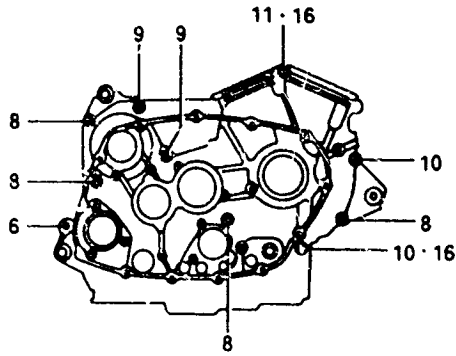


FIG.4

B-7

FIG.4 ( B-7) CRANKCASE



REF.NO.	PART N°.	DESCRIPTION	Q'TY	REMARKS
1-1	11300-45861	CRANKCASE SET	2	model L/M/N/P
1-2	11300-45890	CRANKCASE SET	1	model R
2	09206-11005	.PIN	4	
3-1	01517-06408	.BOLT	4	model L/M/N/P
3-2	01550-06403	.BOLT	4	model R
4-1	01517-06357	.BOLT	1	model L/M/N/P
4-2	01550-06353	.BOLT	1	model R
5-1	01517-08558	.BOLT	1	model L/M/N/P
5-2	01550-08553	.BOLT	1	model R
6	01550-08607	.BOLT	1	
7-1	01517-08758	.BOLT	1	model L/M/N/P
7-2	01550-08753	.BOLT	1	model R
8	01550-08957	.BOLT	6	
9	09103-08109	.BOLT (#x)20,	2	
10-1	09103-08397	.BOLT (5x105)	2	model L/M/N/P
10-2	09103-08133	.BOLT (8x105)	2	model R
11	09103-08096	.BOLT (8x160)	1	
12-1	01517-08407	.BOLT	2	model L/M/N/P
12-2	01550-08403	.BOLT	2	model R
13-1	01517-08457	.BOLT	1	model L/M/N/P
13-2	01550-08453	.BOLT	1	model R
14	01550-03557	.BOLT	2	
15	01550-08657	.BOLT	1	
16	09168-08009	.GASKET	2	
17	09280-17007	.O RING, crankcase	1	
18	09493-20014	.JET, oil gallery	2	
19	09493-28010	.JET, oil gallery	2	
20	09280-04004	.O RING	3	
21	16591-06800	.UNION, oil filter stand	1	
22	09103-10237	BOLT (10x130)	1	+09103-10065
23	09103-10224	BOLT (10x170)	2	
24-1	01107-12208	PLUG, oil drain	1	model L/M/N/P
24-2	01500-12203	PLUG, oil drain	1	model R
25	09168-12002	GASKET	1	
26-1	08322-11104	WASHER	3	model L/M/N/P
26-2	08322-01103	WASHER	3	model R
27	09159-10052	NUT	3	

VX800R E2